

SUMMER

Industrial Park

Kampung Sri Gading, Batu Pahat, Johor.

夏云工业园

FREEHOLD



A Park Crafted to Meet Your Integrated Business Needs

Summer Industrial Park offers
12 Semi-Detached & 2 Bungalow modern factories
from 4,500 sq.ft. to 6,000 sq.ft.

Another Prestigious Project by :
BHOME Direct Sdn. Bhd. (1225636-T)

+60 7 – 354 4560 (HQ Office)

+60 7 – 433 3991 (BP Office)

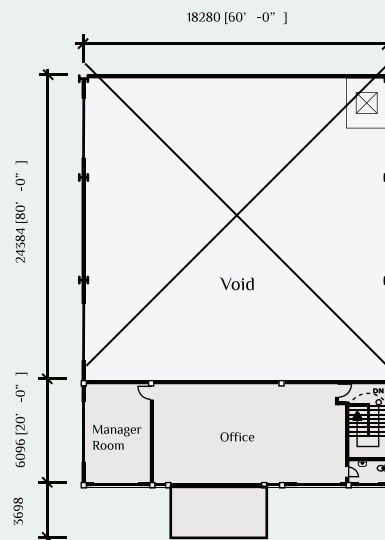
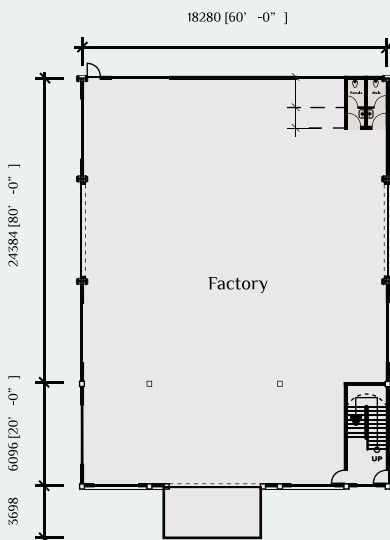
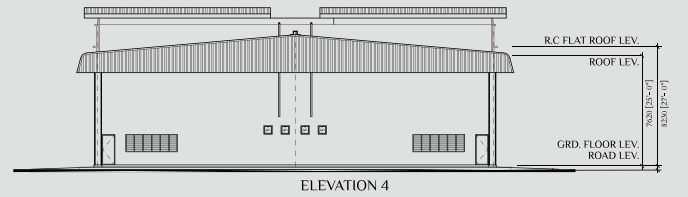
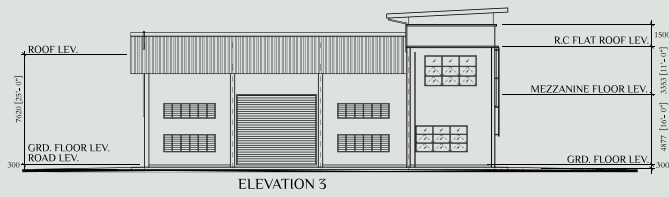
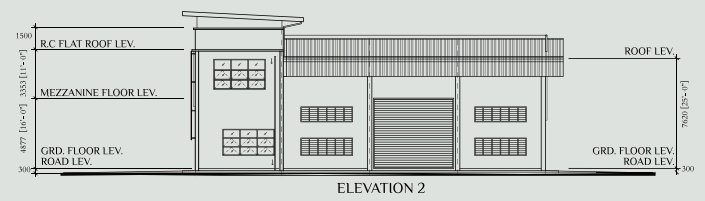
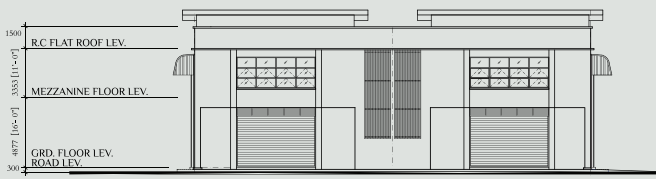
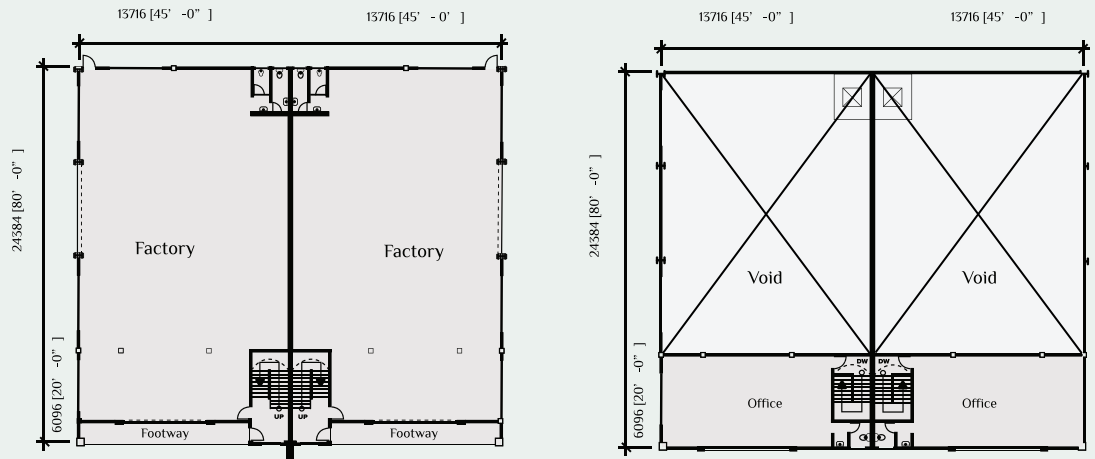
Visit our sales gallery and make appointment with us today!
Monday to Friday (9am to 5pm)

Land area: 7,900 sq.ft. – 16,350 sq.ft.

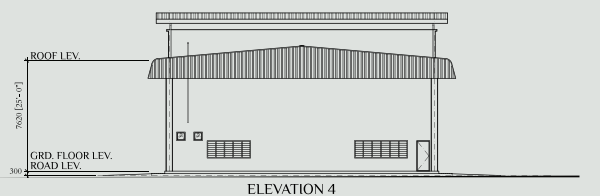
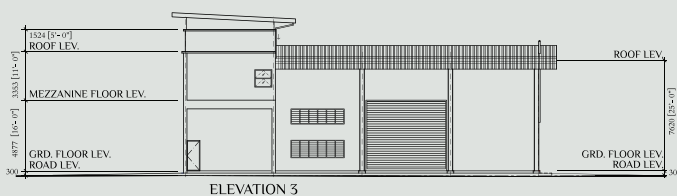
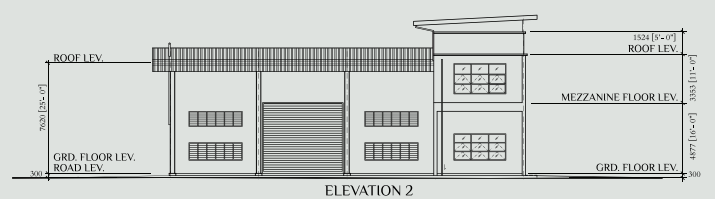
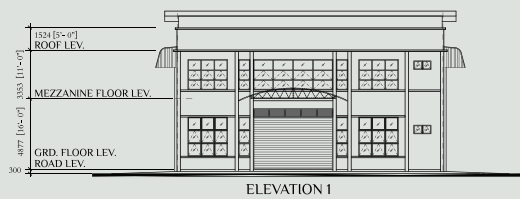
Built-up area: 4,500 sq.ft. – 6,000 sq.ft.

Ceiling height: up to 25 ft.

Semi-Detached



Bungalow



Strategically located in Kampung Sri Gading, Batu Pahat, Johor and surrounded by industries, commercial business and shopping malls.

With the modern design, excellent connectivity and potential development, Summer Industrial Park is an ideal solution for a wide variety of businesses.



Infrastructure & Facilities

- FREE motorized roller shutter & auto gate
- Ample carpark & loading space
- Outstanding & Impressive Façade

Accessibility

- 3 KM to Pura Kencana Sri Gading
- 3 KM to Sri Gading Industrial Park
- 5 KM to Batu Pahat Mall
- 6 KM to Batu Pahat Old Street
- 9 KM to IPD Batu Pahat
- 9 KM to Hospital Batu Pahat
- 25 KM to North-South Expressway (Ayer Hitam)
- 30 KM to North-South Expressway (Yong Peng)

SPECIFICATIONS

Structure	: Reinforced concrete framework
Wall	: Brickwall
Roof Covering	: Metal roofing
Ceiling	: Plaster board ceiling / Skim coat
Window	: Aluminium frame casement top hung glass window / Adjustable glass louvers window
Door	: Mild steel roller shutter / 1 hour fire door / Patented metal frame and door / Aluminium frame solid wood door / Plywood door / PVC door

Floor Finishes

Ground Floor	
Factory	: Cement render
Staircase	: Cement render
Toilet 1	: Tiles
Car Porch	: Cement render
Driveway	: Cement render

Mezzanine Floor

Manager Room	: Cement render
Office	: Cement render
Toilet 2	: Tiles

Wall Finishes

Toilet 1 & 2	: Tiles height 2100mm
--------------	-----------------------

Electrical Point

Lighting point	: 28 nos
Wall lighting point	: 1 nos
Gate lighting point	: 2 nos
Signboard lighting point	: 1 nos
Emergency light	: 1 nos
KELUAR sign	: 3 nos
Automatic gate point	: 1 nos

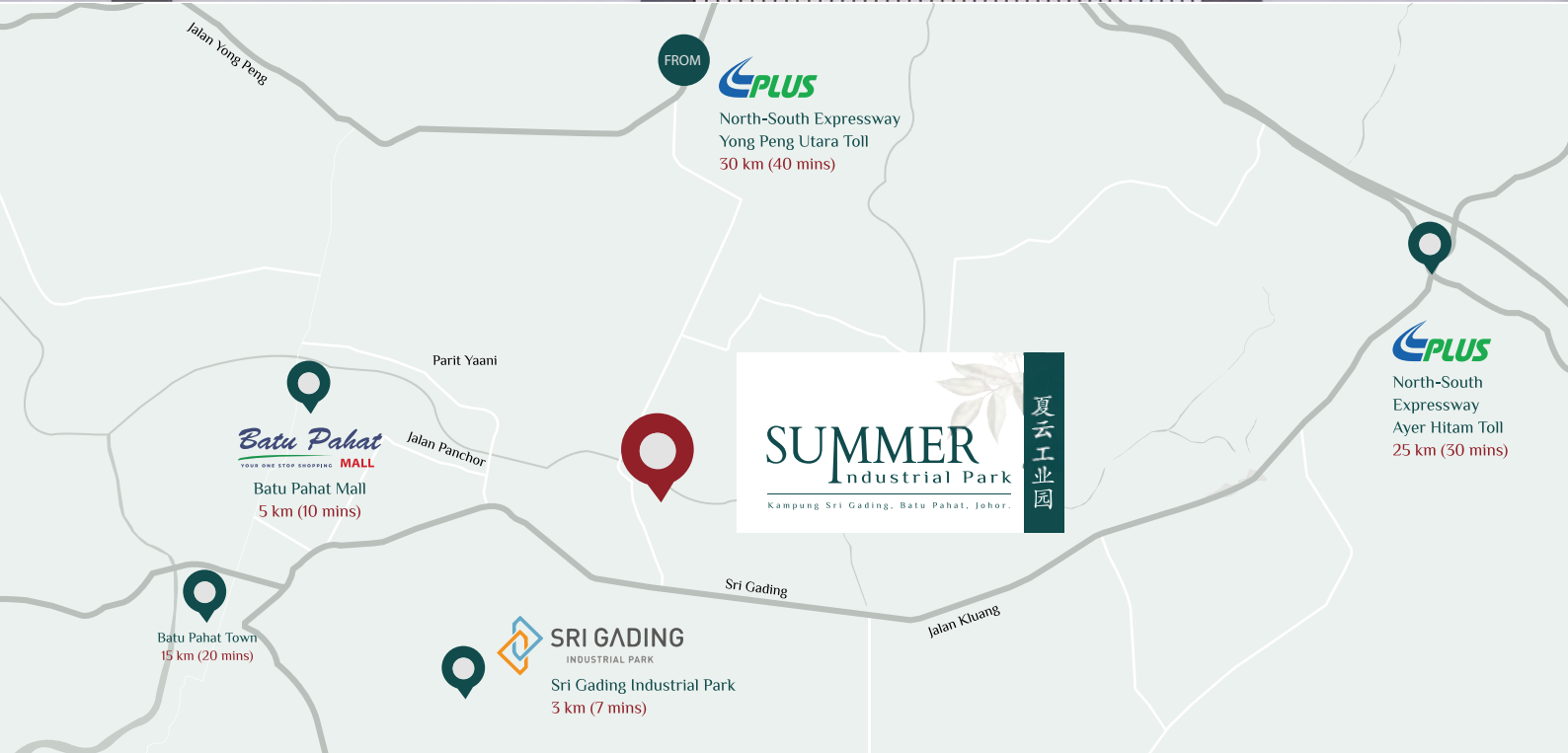
Sanitary Fittings

Sitting WC	: 1 nos
Squat WC	: 2 nos
Basin with tap	: 3 nos
Hand shower	: 1 nos

Gate	: Metal sliding gate
------	----------------------

Fencing	: Brickwall fencing 1800mm high complete with brick pillar
---------	--





Another Prestigious Project By : **BHOME Direct Sdn. Bhd.** (1223636-T)

Headquarter Office :

No. 36-36A, Jalan Molek 2/1, Taman Molek,
81100 Johor Bahru, Johor, Malaysia.

Batu Pahat Branch :

No. 2A, Jalan Perdana 23, Taman Bukit Perdana,
83000 Batu Pahat, Johor, Malaysia.

+60 7 – 354 4560 (HQ Office)

+60 7 – 433 3991 (BP Office)

sales@bihgroup.com

All information contained herein including photographs, illustrations, landscape amenities are subject to change as may be required by the Developer's architect and/or relevant authorities and cannot form part of an offer or contract for the sales and purchase of any unit. Illustrations and pictures in printed materials are computer-generated artists impressions only and are meant to give an approximate idea of the development. All items or plans are subject to variation, modifications, amendments and substitution as may be recommended by the Developer's architect and/or relevant authorizes.



www.bihgroup.com