

FREEHOLD 永久地契

现已开始接受订购
Open For Registration

Lucerna VILLA

KAMPUNG PESERAI KECIL
BATU PAHAT



豪华单层 半独立式洋房 Luxury Single Storey Semi-Detached House

Land Area 土地面积：
3100 - 3400 sq. ft.

Built-Up Area 建筑面积：
1800+- sq. ft.

 3+1 BEDROOMS 卧室
 2 BATHROOMS 浴室

独特的法式建筑风格，
搭配以精致的室内装潢，
Lucerna Villa 是您居家选择。

*Meet the French in Local Town
An unique French designed residential area,
you will miss your home every day*



Living Hall 客厅



Dining Area 饭厅

Idea & Concept

French styled design residential area,
with luxury and comfortable in place.

Luxury but Affordable

Never miss the chance to own a
luxury house with affordable price.

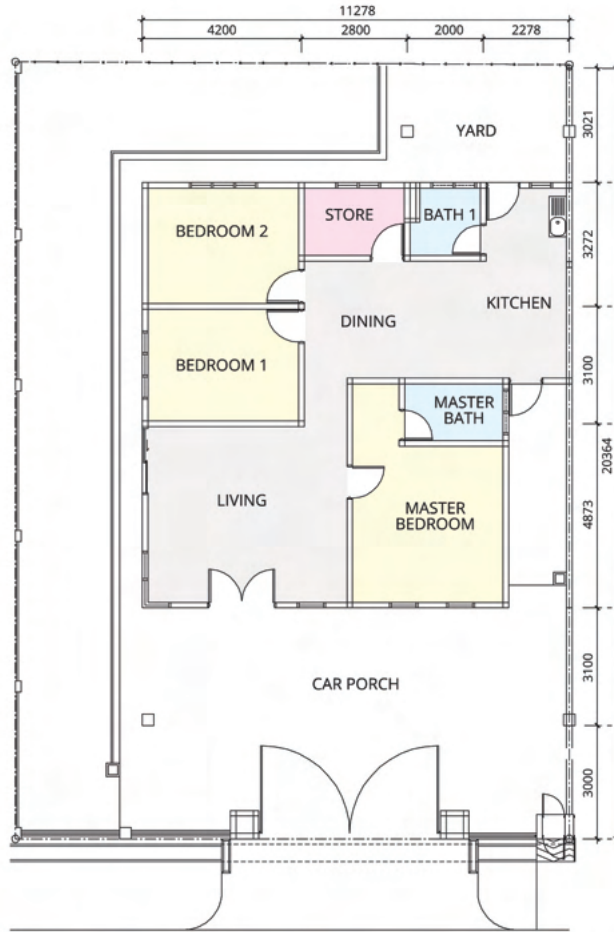
Building Ahead

We are passionate to contribute to
local development with luxury
residential area.

把握机会，
单位有限

LIMITED UNIT
AVAILABLE ONLY!!!

豪华单层半独立式洋房·平面图
Luxury Single Storey Semi-Detached House • Floor Plan



STRATEGIC LOCATION & ACCESSIBILITY

优越地理位置及交通四通八达

- 5km to Putra Specialist Batu Pahat Hospital
5公里到达峇株巴辖专科医院
- 8km to Batu Pahat Town
8公里到达峇株巴辖市区
- 8km to Wet World Batu Pahat
8公里到达峇株巴辖水上乐园和游乐场
- 8km to Batu Pahat Mall
8公里到达峇株巴辖广场购物中心
- 25km to North-South Expressway Yong Peng
25公里通往永平南北高速公路

Developer:
Bhome Direct Sdn. Bhd. (1223636-T)
No. 2A, Jalan Perdana 23, Taman Bukit Perdana, 83000 Batu Pahat, Johor.

+607 - 433 3991 (BP Office) / +607 354 4560 (JB Office)

Disclaimer: This serves as an invitation to get response from public and register only and is not to be treated as an offer for sale. The information contained herein is subject to change and cannot be part of an offer or contract. All renderings are artist's impression only. All measurements are approximate. While every reasonable care has been taken in preparing the visual, the developer cannot be held responsible for any inaccuracy. All the above items and packages are subject to variations, modifications and substitution as may be required by the Authorities or recommended by Architect or Engineer. Any artwork or logos displayed are solely for illustration purpose only and do not represent any existing / future tenancies or endorsement by any specific company within the development of developer. * Terms and conditions apply. Building Plan No.: MPBP(10)/11/40/1974 Developer License No.: 19829-1/12-2021/01160(L) Advertising And Sales Permit: 19829-1/12-2021/01160(P)