

Accessibility

- 3.5 km >>> Kota Kinabalu International Airport
- 5.0 km >>> Tanjung Aru Beach
- 5.0 km >>> Queen Elizabeth Hospital
- 6.0 km >>> Suria Sabah Shopping Mall
- 6.0 km >>> Gleneagles Hospital
- 6.0 km >>> Imago Shopping Mall



313 SUITES

CONTEMPORARY
LUXURY
YOU DESERVE



B INTERNATIONAL HOLDINGS

Another Prestigious Project By:
ALPHABET PROPERTIES SDN BHD (025408-P)
No. 36-36A, Jalan Molek 2/1, Taman Molek,
81100 Johor Bahru, Johor, Malaysia.
Tel +607-354 4560 Email sales@bihgroup.com

*All information contained herein, including photographs, brochures, amenities are subject to change as may be required by the Developer's architect and/or relevant authorities and cannot form part of an offer or contract for the sales and purchase of any unit. Illustrations and pictures in printed materials are computer-generated artist impressions only and are meant to give an approximate idea of development. All items or prices are subject to variation, modifications, amendments and substitution as may be recommended by the Developer's architect and/or relevant authorities.



Sky Lounge

Introduction

313 Suites is a rare new project in Kota Kinabalu, develops to meet your contemporary luxury needs with thoughtful modern design and unrivalled accessibility. It is the first hotel-inspired serviced suites, designed to allow owners to enjoy the luxuries of a hotel right at home. Perched at the top of 313 Suites, a sky deck offers residents the panoramic view of Kota Kinabalu City skyline while enjoying a delicious meal or simply having a drink.

313 Suites is professionally managed by a team that is highly trained in the hospitality industry. From renting out the units to visitors of Kota Kinabalu to maintenance of the units, the team assured owners both worry free and hassle free in owning the units.

313 Suites has an unparalleled location, being close to the most important and exciting locations in Kota Kinabalu, such as Kota Kinabalu International Airport, Kota Kinabalu City centre, Tanjung Aru beach and Jesselton Point. Such proximity brings with it convenience, time-saving, and an assurance that your property will keep its value well.

Building Design



Services



24 Hours Security



Laundry Service



Shuttle Van Service



Concierge Service

Facilities



Gym Room



Swimming Pool



Function Room



Lobby Resting Area



24 Hours Convenience Shop



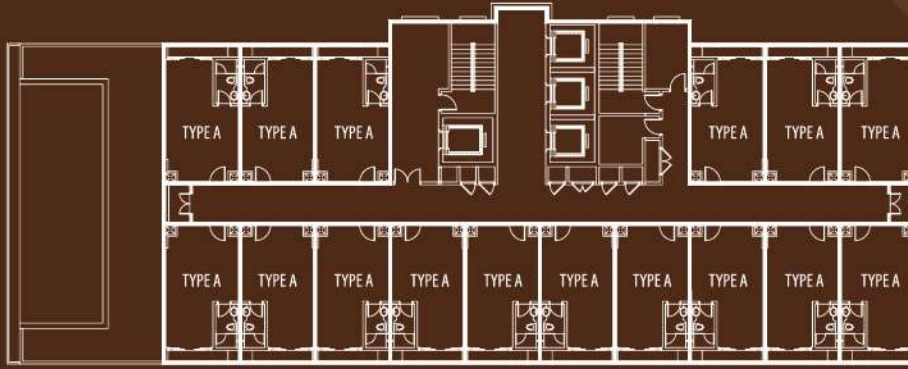
Luggage Storage



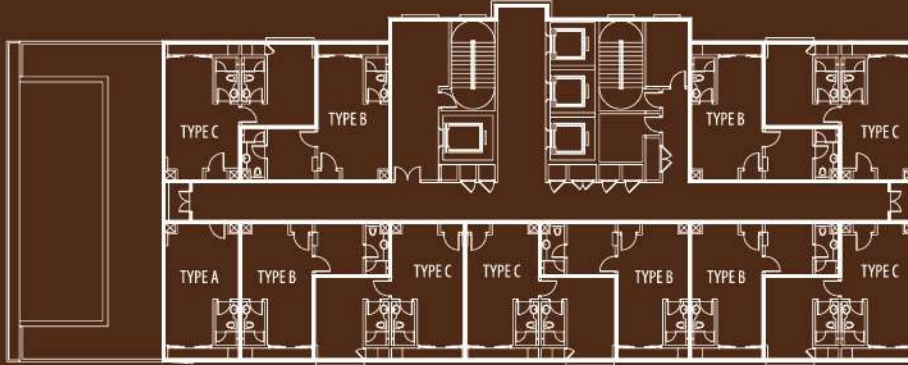
CCTV



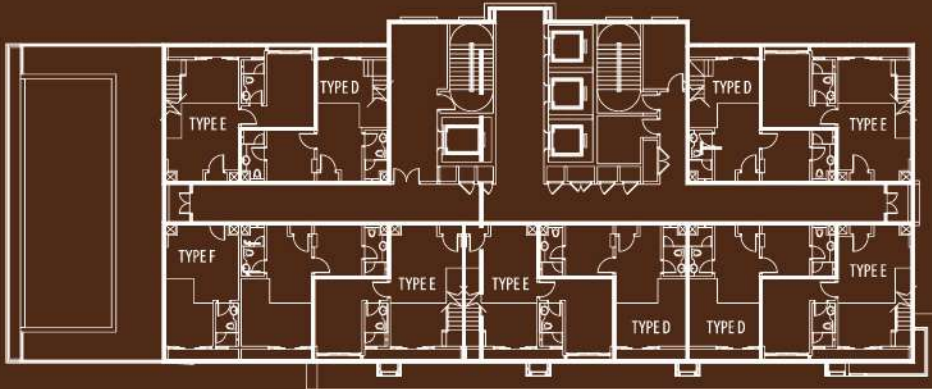
** All information disclosed are subject to change during actual launch.
** All pictures shown are for illustration purpose only. Actual product may vary due to product enhancement.



LEVEL 3-10



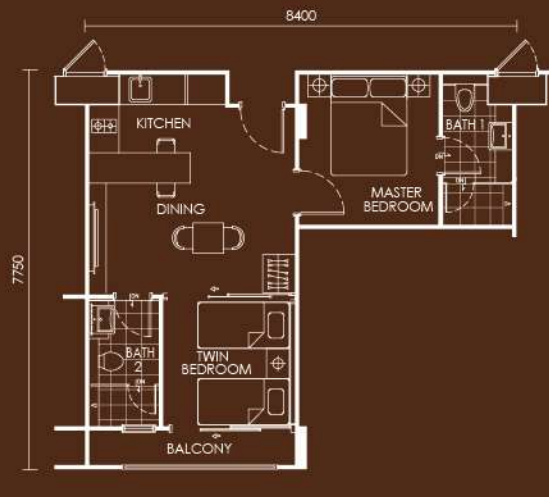
LEVEL 11-18



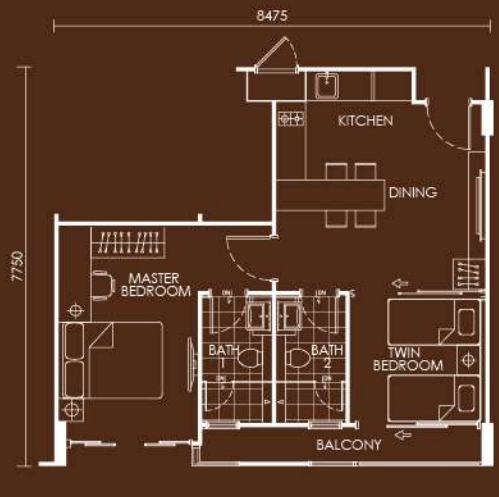
LEVEL 19



TYPE A



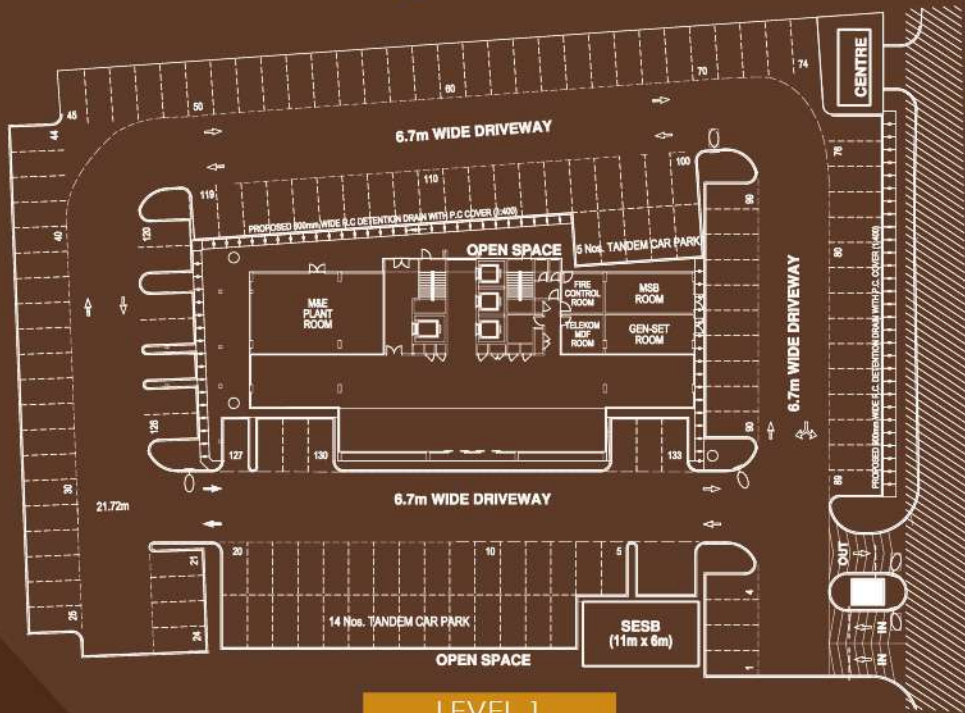
TYPE B



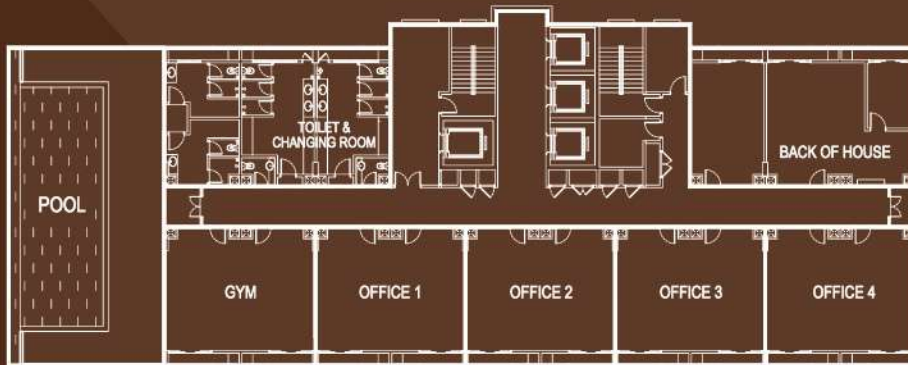
TYPE C

*All information contained herein including photographs, landscape amenities are subject to change as may be required by the Developer's architect and/or relevant authorities and cannot form part of an offer or contract for the sales and purchase of any unit. Illustrations and pictures in printed materials are computer-generated artists impressions only and are meant to give an approximate idea of development. All items or plans are subject to variation, modifications, amendments and substitution as may be recommended by the Developer's architect and/or relevant authorities.

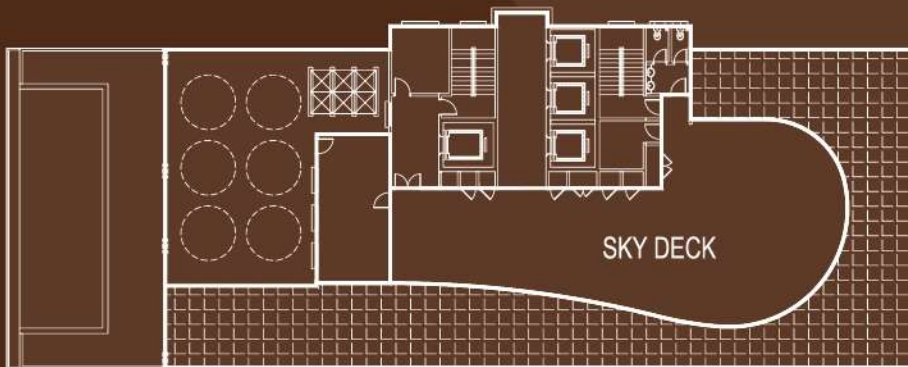
Layout Plan



LEVEL 1



LEVEL 2



LEVEL 20

Unit Type	A	B	C	D	E	F	Total
sq. ft	360	484	564	800	943	1381	
No. of Units	136	40	40	4	5	1	226

*All information contained herein including photographs, landscape amenities are subject to change as may be required by the Developer's architect and/or relevant authorities and cannot form part of an offer or contract for the sales and purchase of any unit. Illustrations and pictures in printed materials are computer-generated artists impressions only and are meant to give an approximate idea of development. All items or plans are subject to variation, modifications, amendments and substitution as may be recommended by the Developer's architect and/or relevant authorities.